

UNOBSTRUCTED 24.0m SIGHT LINE FROM A 2.4m SETBACK TO THE NEAR SIDE ROAD EDGE IN ACCORDANCE WITH DMURS

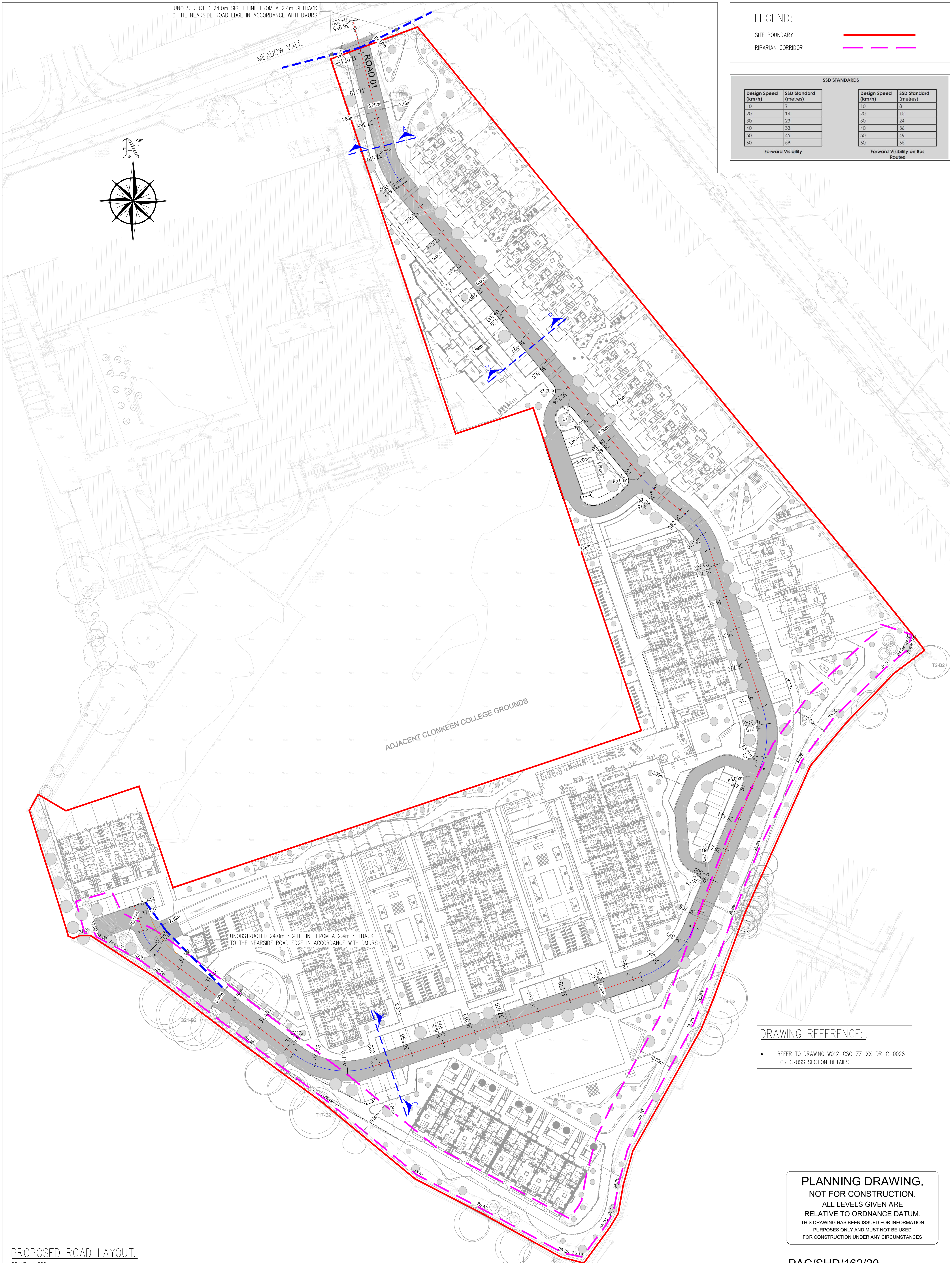
**LEGEND:**

- SITE BOUNDARY ———
- RIPARIAN CORRIDOR - - - - -

**SSD STANDARDS**

Design Speed (km/h)	SSD Standard (metres)	Design Speed (km/h)	SSD Standard (metres)
10	7	10	8
20	14	20	15
30	23	30	24
40	33	40	36
50	45	50	49
60	59	60	65

Forward Visibility Forward Visibility on Bus Routes



UNOBSTRUCTED 24.0m SIGHT LINE FROM A 2.4m SETBACK TO THE NEAR SIDE ROAD EDGE IN ACCORDANCE WITH DMURS

**DRAWING REFERENCE:**

- REFER TO DRAWING W012-CSC-ZZ-XX-DR-C-0028 FOR CROSS SECTION DETAILS.

**PLANNING DRAWING.**  
 NOT FOR CONSTRUCTION.  
 ALL LEVELS GIVEN ARE RELATIVE TO ORDNANCE DATUM.  
 THIS DRAWING HAS BEEN ISSUED FOR INFORMATION PURPOSES ONLY AND MUST NOT BE USED FOR CONSTRUCTION UNDER ANY CIRCUMSTANCES

PROPOSED ROAD LAYOUT.  
 SCALE = 1:500

PAC/SHD/162/20

W012

- NOTES**
1. For setting out refer to Architect's drawings.
  2. This drawing to be read in conjunction with all other Architectural and Engineering drawings and all other relevant drawings and Specifications.
  3. DO NOT SCALE THIS DRAWING. Use figured dimensions only.
  4. No part of this document may be reproduced or transmitted in any form or stored in any retrieval system of any nature without the written permission as copyright holder except as agreed for use on the project for which the document was originally issued.
  5. Ordnance Survey Ireland Licence Number EN 0074021

Rev. No.	Date	REVISION NOTE	Dm. By	Chkd. By
P1	14.10.2020	ARCHITECTS LAYOUT REVISED	JS	OS
P2	15.06.2021	ARCHITECTS LAYOUT REVISED	JS	OS

Architect	Scott Tallon Walker	
Project	Proposed Development at Clonkeen Road	
Title	Proposed Road Layout	
Dwg. No.	W012-CSC-ZZ-XX-DR-C-0008	
Date	Dm. by	Chkd. by
02.06.2020	JS	NB
Scale	1:500 @A1	Revision
		<b>P2</b>

**CS Consulting Group**  
 DUBLIN | LONDON | LIMERICK

Head Office  
 19-22 Dame Street, Dublin 2.  
 T: +353 (0)1 5480863 F: +353 (0)1 9011355  
 E: info@csconsulting.ie  
 W: www.csconsulting.ie

Quality Environment I.S. EN ISO 9001:2008  
 Energy I.S. EN ISO 14001:2004  
 Health & Safety OHSAS 18001:2007